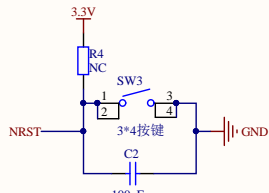
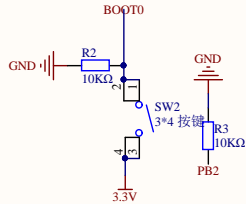


用户按键
User KEY

V1.3 增加用户按键 KEY
V3.0 增加R1 330R电阻, 防止用户错误配置IO

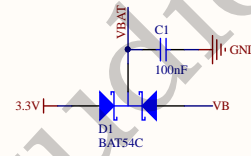


复位电路
Reset circuit

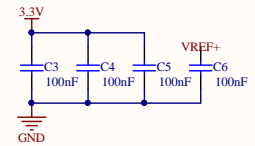
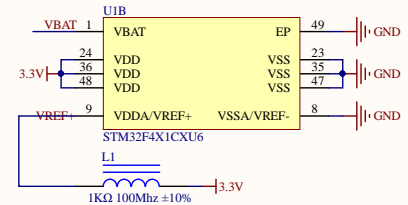


BOOT设置
BOOT Settings

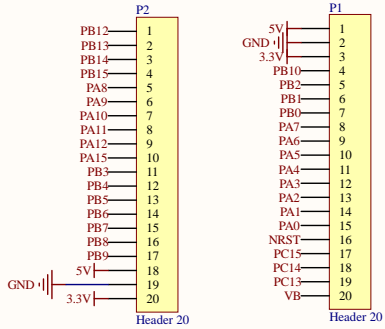
V1.2 修改BOOT跳线为BOOT0按键, BOOT1 10K下拉



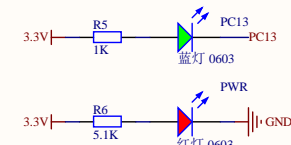
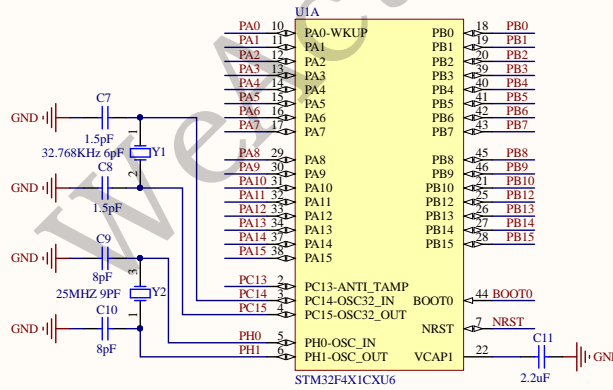
RTC电源
RTC circuit



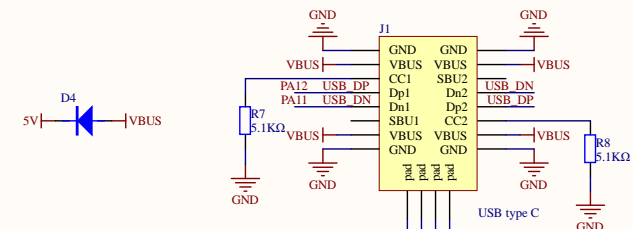
STM32电源部分
STM32 Power supply



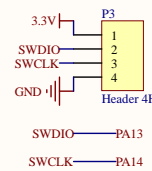
V1.1 将18由GND改为5V, 支持直接驱动一路舵机



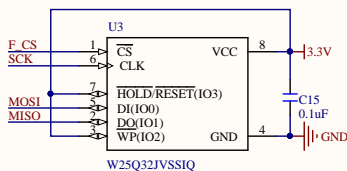
指示灯
Indicator light



Type-C 接口
Type-C interface

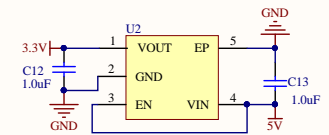


SW 调试下载接口
SW debug download interface



FLASH 自行购买焊接

V2.0 MISO脚由PA6改为PB4,方便STM32F411用户同时连接TF卡和FLASH
V2.1 MISO脚由PB4改回PA6
V2.2 解决带e-marker芯片的数据线不能供电问题,增加ID4二极管,防止电涌



5V -> 3.3V 电源转换
5V -> 3.3V Power conversion

WeAct Studio

Title MiniF4 Bottom有V3.0字样 V3.0

Size	Number	Revision
A3		V3.0

Date:	2020/3/10	Sheet	of
File:	E:\AD19\MiniF4x1Cx.SchDoc	Drawn By:	zhuyix

1 2 3 4 5 6 7 8